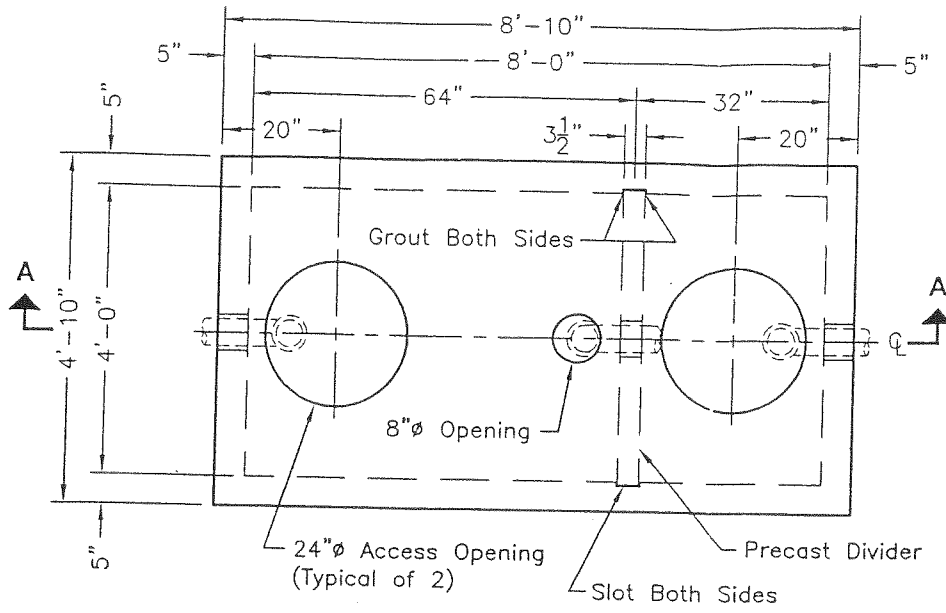


2901

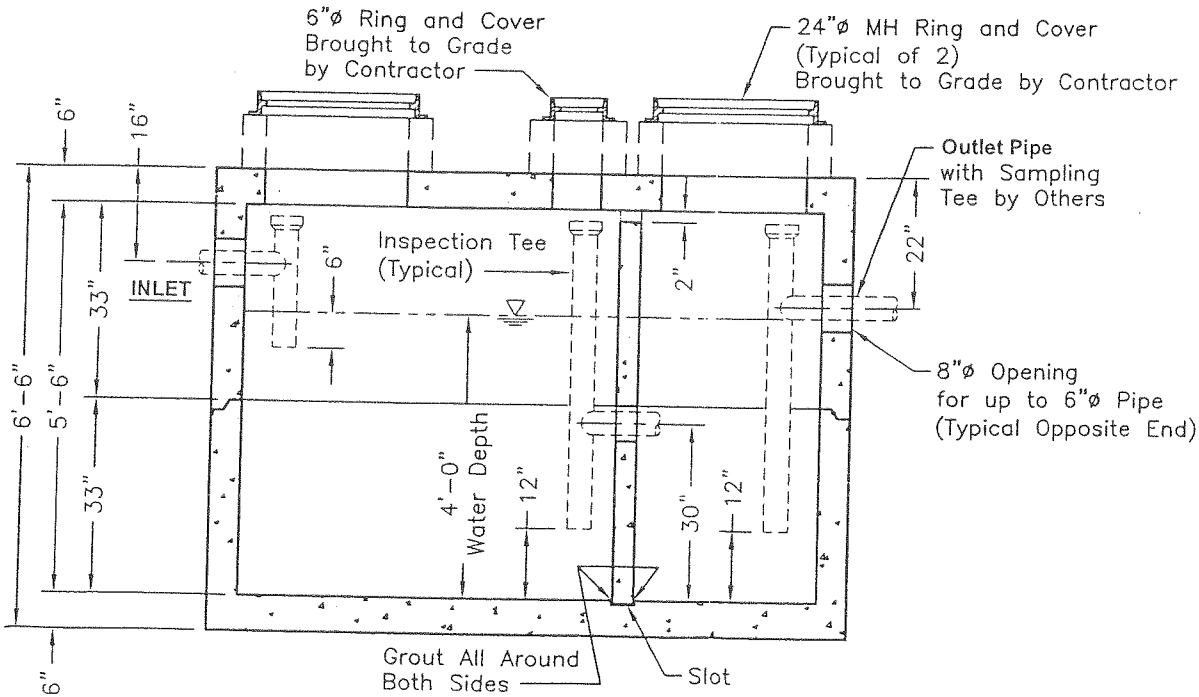
**48-1000-GA  
GREASE INTERCEPTOR  
1,000 GALLON CAPACITY**

GENERAL NOTES:

1. Concrete: 28 Day Compressive Strength  $f'c = 4,500$  psi.
2. Reinforcement: ASTM A-615, Grade 60
3. Loads: H-20 Truck Wheel with 30% Impact per AASHTO
4. Butyl Rubber Joint Sealant SS-S-00210
5. **GRAY WATER ONLY**, Black Water Shall be Carried by Separate Side Sewer.
6. Contractor to:
  - Supply and Install All Piping and Sampling Tees
  - Grout in All Pipes and Weirs
  - Fill w/ Clean Water Prior to "Start-Up" of System
  - Verify Size and Location of All Openings



**PLAN VIEW**



**SECTION A-A**

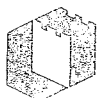
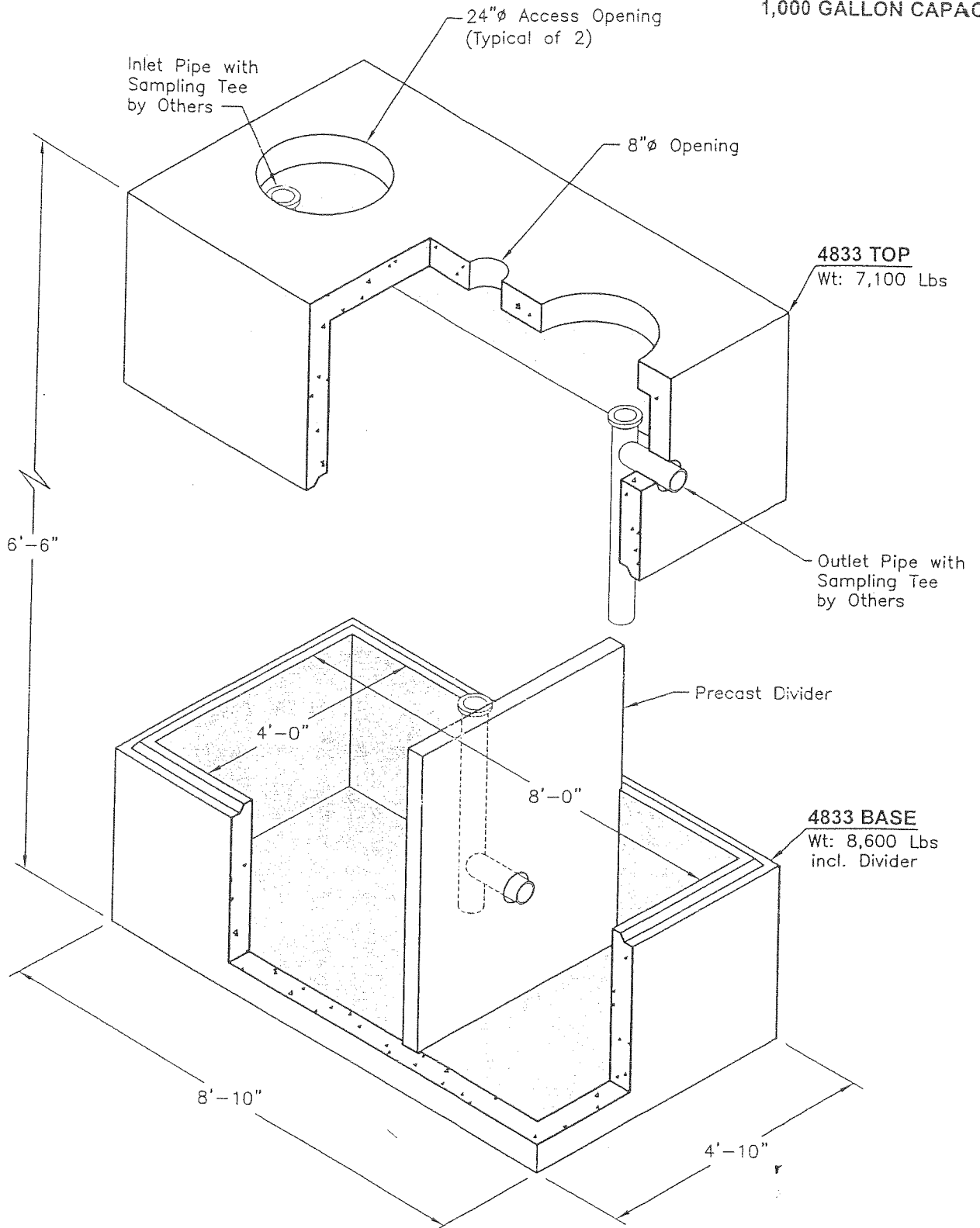
**DESIGN CRITERIA**

Uniform Plumbing Code - Appendix H

$$\text{Number Of Meals Per Peak Hour} \times \text{Waste Flow Rate} \times \text{Retention Time} \times \text{Storage Factor} = \text{CAPACITY IN GALLONS}$$

Scale: 3/8"=1'-0"

**48-1000-GA**  
**GREASE INTERCEPTOR**  
**1,000 GALLON CAPACITY**



**Oldcastle® Precast, Inc.**

www.oldcastle-precast.com

5900 East Division  
 Lebanon, Tennessee 37090

Phone (615) 453-6111  
 Fax (615) 453-6080

ITEMS ARE SUBJECT TO CHANGE WITHOUT NOTICE.  
 FOR DETAILS SEE REVERSE SIDE.